

LED SPOT

TINY



TINY – RESIDENTIAL AND FURNITURE LIGHTING

Extremely small round one-single-LED spotlight perfect for a brilliant effect on your shelves.

The LEDSpot Tiny is a powerful, high-quality, easily customizable spotlight similar to a diamond. It is ideal to give a fresh look and to simply astonish your customers.

Typical applications

- Replacement of residential spots with G4 lamps
- Residential lighting
- Furniture lighting
- Retail lighting (shelves)

Tiny

Complete LEDSpot equipped with optics, leads and metal frame

Technical notes

Metal frame: round

For cut-out: Ø 26 mm

Beam angle: 36°

Colour accuracy: 3SDCM

CRI: R_a 80

Leads: Cu tinned, stranded conductors AWG22,

PVC-insulation, lengths: 250 mm

Use of external LED constant-current drivers

Snap-in plastic clips for easy installation

Degree of protection: IP20

Allowed ambient temperature: 0 to 35 °C

Allowed storage temperature: -30 to 60 °C

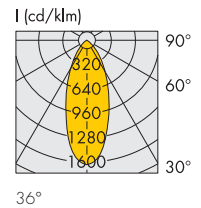
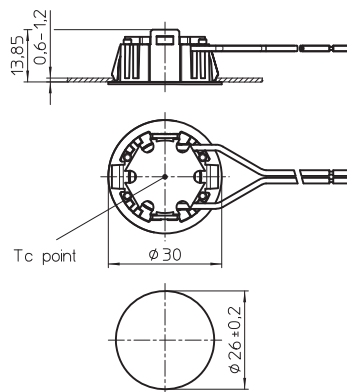
Lumen maintenance L70/B50:

50,000 hrs. (t_c = 75 °C)

Max. operating temperature at t_c point: 100 °C

Weight: 10.6 g

Packaging unit: 40 pcs.



Type	Description	Ref. No.		Colour	Correlated colour temperature (K)	Typ. luminous flux* (lm), typ. voltage* (U _{hyp.}) and typ. power consumption* (P _{el.}) at 350 mA	Typ. CRI R _a	Beam angle °	Light intensity at 350 mA Candela	Energy efficiency at 350 mA
		Frame colour silver	white							
						P _{el.} = 0.98 W, U _{hyp.} = 2.8 V				
LCH044	Tiny 219 3000K 36°	563913	565884	warm white	3000	130	80	36	220	A++
LCH044	Tiny 219 4500K 36°	563915	565885	neutral white	4500	140	80	36	240	A++

Emission data at t_i = 80 °C | * Measurement tolerance of luminous flux, voltage, power consumption: ± 5% | Further colour temperatures on request

LED Driver 350 mA

You will find more information about our LED drivers on our website: www.vossloh-schwabe.com

Capacity range W	Output current DC mA	Output voltage DC V	Ref. No.	Type	Dimming	Max. service life time hrs. at 70 °C	Connection	Dimensions LxWxH mm
IP20								
8	350	2-24	186180	ECXe 350.018	no	100,000	screw	65x30.7x21.5
11	350	2-32	186424	ECXe 350.009	no	50,000	screw	128x37x28

Please ensure you choose the correct LED driver for the module in question and that the respective output parameters (current, voltage, wattage) are correct

The values contained in this data sheet can change due to technical innovations. Any such changes will be made without separate notification.

Tiny Kit

Kit for installation of 5 Tiny spots

Plug and Play kit for easy and fast connection
 Consisting of constant-current LED driver 186341
 and 5 Tiny spots (the number of spots can be
 reduced to three) and connection cables
 Total power consumption of the kit: 6.6 W
 Packaging unit: 1 pcs.

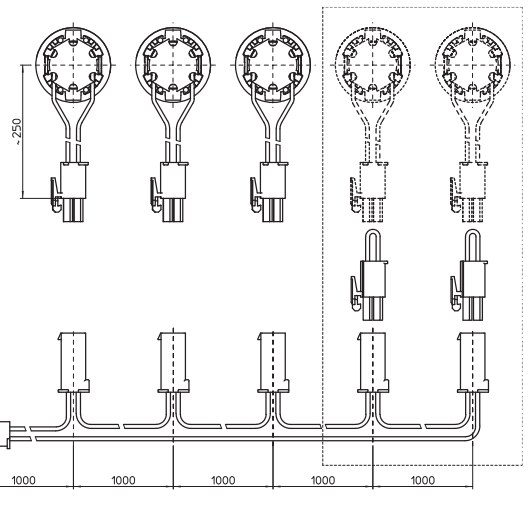
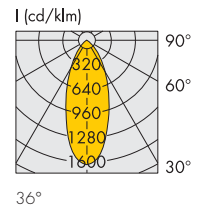


Technical notes

Metal frame: white, round
 For cut-out: Ø 26 mm
 Beam angle: 36°
 Colour accuracy: 3SDCM
 CRI: R_a 80
 Leads: Cu tinned, stranded conductors AWG22,
 PVC-insulation, lengths: 250 mm
 Snap-in plastic clips for easy installation
 Degree of protection: IP20
 Allowed ambient temperature: 0 to 35 °C
 Allowed storage temperature: -30 to 60 °C
 Lumen maintenance L70/B50:
 50,000 hrs. (t_c = 75 °C)
 Max. operating temperature at t_c point: 100 °C
 Weight of 5 spots and 1 driver: 250 g

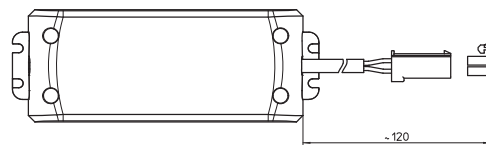
EasyLine LED driver 186341

Type: ECXe 350.078
 Dimensions: 122.8x45x19 mm
 Mains voltage: 220–240 V ±10%
 Mains frequency: 50–60 Hz
 Max. output: 12.6 W
 Current output DC: 350 mA
 Voltage output DC: 8.4–36 V
 Power factor at full load: > 0.5
 Screw terminals: 0.5–2.5 mm²
 Electronic short-circuit protection,
 Overload protection, protection
 against "no load" operation,
 degree of protection: IP20,
 protection class II, SELV
 Product guarantee: 5 years



LED drivers

Dimensions: 122.8x45x19 mm



Type	Description	Ref. No.	Colour	Correlated colour temperature (K)	Typ. luminous flux* (lm), typ. voltage* (U _{typ.}) and typ. power consumption* (P _{el}) at 350 mA	Typ. CRI R _a	Beam angle °	Light intensity at 350 mA Candela	Energy efficiency at 350 mA
LCH044	Tiny 219 3000K 36° KIT	566611	warm white	3000	130**	80	36	220**	A++

Emission data at t_j = 80 °C | * Measurement tolerance of luminous flux, voltage, power consumption: ± 5% | ** Values for a single spot
 Further colour temperatures or frame colours on request

The values contained in this data sheet can change due to technical innovations. Any such changes will be made without separate notification.

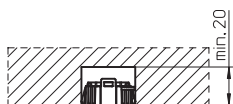
Tiny – Installation Instruction

General safety information

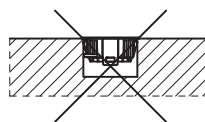
- VS product may only be installed and commissioned by authorised and fully qualified staff.
- These instructions must be carefully read before installing and commissioning the system, as this is the only way to ensure safe and correct handling.
- An external driver for 350 mA is required. (Included with the Tiny Kit Ref. No.: 566611.)
- Before any work is carried out on the equipment, it must be disconnected from the mains.
- All valid safety and accident-prevention regulations must be observed.
- The products should never be inexpertly opened. Repairs may only be undertaken by the manufacturer.
- Dimming: The dimming characteristics of the installed driver have to be observed.
- The photo biological safety of the LED modules is classified into risk groups in accordance with EN 62471: 2008 and IEC TR 62778: risk group 1.
- Do not use LEDSpots Tiny in locations containing a bath or shower; LEDSpots Tiny are IP20 protected.

See drawing and cut out for each product on previous pages

Built-in



Correct position



All VS LED Spots at a glance

Tiny

LEDSpot with optics, leads and metal frame
For cut-out Ø 26 mm
Beam angle 36°
Lumen output 140/130 lm



StartLine

LEDSpot with optics, heat sink, leads and frame
For cut-out Ø 56 mm
Beam angle 30° or 36°
Lumen output 220 lm



EffectLine

LEDSpot with optics, heat sink, leads and metal frame
For cut-out Ø 37 mm
Beam angle 10°, 16°, 28° or 38°
Lumen output 250 lm



IPLine

LEDSpot IP54 with optics, heat sink, leads and metal frame
For cut-out Ø 56 mm
Beam angle 40° or 50°
Lumen output 320/220 lm



FlatLine

LEDSpot with optics, leads and metal frame
For cut-out Ø 56 mm
Beam angle 60°
Lumen output 260/140 lm



DisLine SMD

LEDSpot with optics, heat sink, leads and metal frame
For cut-out Ø 56 mm
Beam angle 35° or 50°
Lumen output 230 lm



SmartLine COB

LEDSpot with optics, heat sink, leads and metal frame
For cut-out Ø 56 mm
Beam angle 40°
Lumen output 320 lm



SoftLine

LEDSpot with heat sink, leads and metal frame
For cut-out Ø 56 mm
Beam angle 65°
Lumen output 205/225 lm



SmartLine SMD

LEDSpot with optics, heat sink, leads and metal frame
For cut-out Ø 56 mm
Beam angle 40°
Lumen output 220 lm



Revo

LEDSpot with optics and frame
For cut-out 67.5x25x5 mm
Beam angle 60°
Lumen output 250/130 lm

