

# TRACK ADAPTER UIT-1 P-DALI



## TRACK ADAPTER UIT-1 P-DALI

**570146, 570147**

### Typical Applications

For common track systems

- Retail lighting



### Track Adapter UIT-1 P-DALI

- **DIMMABLE: DALI**
- **COMPATIBLE WITH DIFFERENT DIMMABLE TRACK SYSTEMS**
- **PRODUCT GUARANTEE: 2 YEARS**

## Track Adapter UIT-1P-DALI

### Product features

- Adapter for common dimmable 3-phase track systems (Erco, Eutrac, Globaltrac, Iguzzini, Zumtobel)
- Material: PC, white or black

### Electrical features

- Nominal rating: 3 A / 250 V
- IDC terminals: 0.5–0.75 mm<sup>2</sup> (AWG20–AWG18)

### Safety features

- Integrated DALI protection
- With earth connection
- Protection class I
- Two-sided locking for secure fixing in the track rail

### Packaging units

Type	Packaging unit		
	Pieces per box	Boxes per pallet	Weight g
14936	23	1664	50

### Reference numbers

Type: 14936

**Ref. No.: 570146** white

**Ref. No.: 570147** black



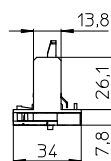
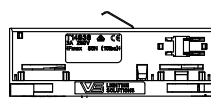
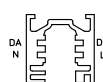
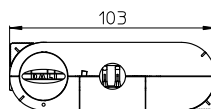
### Applied standards

- EN 60570



### Dimensions

- Casing: UIT-1P-DALI
- Length: 103 mm
- Width: 34 mm
- Height: 33.9 mm (visible 7.8 mm)



### Product guarantee

- 2 years
- The conditions for the Product Guarantee of the Vossloh-Schwabe Group shall apply as published on our homepage ([www.vossloh-schwabe.com](http://www.vossloh-schwabe.com)). We will be happy to send you these conditions upon request.

### Retaining collars for luminaire heads

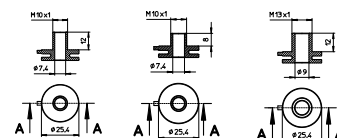
Material: aluminium

350° rotatable

**Ref. No.: 570360** M10x1, length: 12 mm

**Ref. No.: 570955** M10x1, length: 8 mm

**Ref. No.: 570361** M13x1, length: 12 mm



### Hand insertion tooling VS for IDC terminals

Attachment for screwdriver Ø 5.8 mm

Material: plastics

**Ref. No.: 109480**



The values contained in this data sheet can change due to technical innovations. Any such changes will be made without separate notification.

## Assembly and Safety Information

Installation must be carried out under observation of the relevant regulations and standards. Installation must be carried out in a voltage-free state (i.e. disconnection from the mains). The following advices must be observed, non-observance can result in the destruction, fire and/or other hazards.

### Mandatory regulations

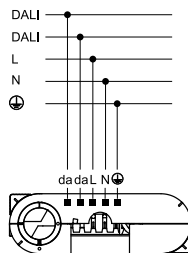
- DIN VDE 0100
- EN 60598-1

### Mechanical mounting

- Mounting position and location:  
Common track system; for vertical wall mounting an additional component must be used to prevent the sliding of the adapter in the rail.
- Degree of protection: IP20
- Inserting into rail: The track adapter has two rotatable locking devices at the current collector shaft and on the opposite side. By actuating the rotary locking device the adapter is locked securely in the rail.
- Load vertical: max. up to 50 N
- Torque on extension arm: 2 Nm

### Electrical installation

- Connection terminals: IDC terminals for rigid or flexible conductors with a section of 0.5–0.75 mm<sup>2</sup> (AWG20–AWG18), insulation diameter: max. 2.75 mm
- Electrical connection: Hand insertion tooling VS (attachment for screwdriver Ø 5.8 mm) Ref. No.: 109480
- Through-wiring: Is not allowed.
- Wiring diagram: For luminaire connection



The values contained in this data sheet can change due to technical innovations. Any such changes will be made without separate notification.