

LED MODULES FOR MAINS VOLTAGE

DRIVER-ON-BOARD
TECHNOLOGY



LED MODULES READYLINE C

Built-in LED modules with integrated driver for direct connection to mains voltage

With so-called Driver-on-Board technology (DoB), the control gear unit is directly integrated into the LED module, which permits direct connection to mains voltage (220–240 V, 50–60 Hz).

The built-in LED modules of the ReadyLine series are suitable for residential and furniture lighting, as a replacement for halogen, energy-saving compact fluorescent lamps.

Advantages at a glance

- Direct connection to mains voltage
- Protection cover to prevent electrical shock
- More flexible space-saving luminaire designs due to absence of driver
- Direct replacement for conventional lamps in existing luminaires
- High power factor: > 0.9
- Long service life: up to 50,000 hours

Technical notes

Mains voltage: 220–240 V, 50/60 Hz
Aluminium PCB for optimum thermal management
Heat sink made of thermoconductive resin
or co-moulded heat sink made of thermoconductive resin and aluminium
Protection cover: PC, UV-glued
or rivetted (module with heat sink)
RFI suppressed

Typical applications

- Replacement for compact fluorescent lamps
- Integration in luminaires
- Residential lighting
- Architectural lighting
- Retail lighting
- Furniture lighting

ReadyLine C 10

Technical notes

Power factor: > 0.97

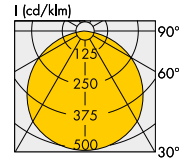
Dimensions: Ø 100 mm,

Ø 120 mm with heat sink

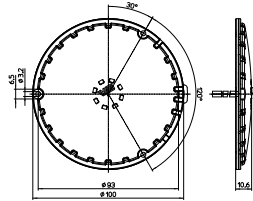
Screw terminals for LED module with heat sink:
2.5 mm²

Welded leads for LED module without heat sink:
double FEP/FEP-insulation, length: 300 mm,
central or lateral lead exit

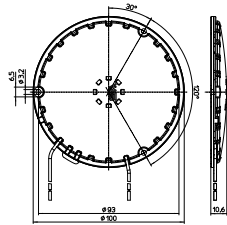
Fixing holes for screws M3 or
self-tapping screws 2.9



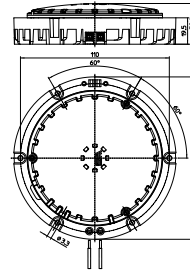
With central lead exit



With lateral lead exit



With heat sink, protection cover and 2-poles screw terminals



Max. output W	Type	Ref. No.		Voltage AC 50/60 Hz V	Number of LEDs pcs.	Colour	Correlated colour temperature K	Cover	Luminous flux lm		CRI Ra	Lead exit	Energy efficiency
		with heat sink	without heat sink						min.	typ.			
10	LR54	559537	559539	220–240	54	warm white	2600...2900	clear	1010	1120	> 80	central	A++
	LR54	on request	559540									lateral	A++
	LR54	559538	559541	220–240	54	warm white	2600...2900	diffuse	890	950	> 80	central	A+
	LR54	on request	559542									lateral	A+
	LR54	554951	554943	220–240	54	warm white	2900...3200	clear	1100	1200	> 80	central	A++
	LR54	on request	554944									lateral	A++
	LR54	554952	554945	220–240	54	warm white	2900...3200	diffuse	935	1020	> 80	central	A+
	LR54	on request	554946									lateral	A+
	LR54	554953	554947	220–240	54	neutral white	3700...4200	clear	1150	1250	> 80	central	A++
	LR54	on request	554948									lateral	A++
LR54	554954	554949	220–240	54	neutral white	3700...4200	diffuse	980	1060	> 80	central	A+	
LR54	on request	554950									lateral	A+	
17.5	LR42	559543	559545	220–240	42	warm white	2600...2900	clear	1140	1330	> 80	central	A+
	LR42	on request	559546									lateral	A+
	LR42	559544	559547	220–240	42	warm white	2600...2900	diffuse	930	1100	> 80	central	A
	LR42	on request	559548									lateral	A
	LR42	553828	553820	220–240	42	warm white	2900...3200	clear	1440	1550	> 80	central	A+
	LR42	on request	553821									lateral	A+
	LR42	553829	553822	220–240	42	warm white	2900...3200	diffuse	1230	1340	> 80	central	A+
	LR42	on request	553823									lateral	A+
	LR42	553830	553824	220–240	42	neutral white	3700...4200	clear	1480	1590	> 80	central	A+
	LR42	on request	553825									lateral	A+
	LR42	553831	553826	220–240	42	neutral white	3700...4200	diffuse	1260	1370	> 80	central	A+
	LR42	on request	553827									lateral	A+

Accessories		Description	Tape thickness	Thermal conductivity	Breakdown voltage*
—	—	552039 Cord grip with 2 screws for LED modules with heat sink	—	—	—
—	—	555012 Thermally conductive adhesive transfer tape Ø 100 mm	0.25 mm	0.8 W/mK	5.5 kV
—	—	553981 Thermally conductive transfer tape, non-adhesive Ø 99 mm	0.25 mm	2 W/mK	3 kV
—	—	553795** Thermally conductive transfer tape, adhesive on both sides Ø 104 mm	0.19 mm	0.9 W/mK	10.3 kV

* Average value (not for specification purpose) | ** For use in luminaires of protection class I (has to be tested in luminaire)

The values contained in this data sheet can change due to technical innovations. Any such changes will be made without separate notification.

ReadyLine C 08

Technical notes

Power factor: > 0.97

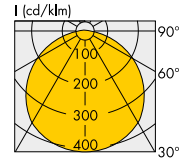
Dimensions: Ø 81.5 mm,

Ø 120 mm with heat sink

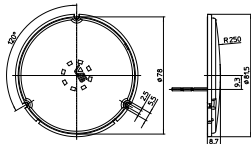
Screw terminals for LED module with heat sink:
2.5 mm²

Welded leads for LED module without heat sink:
double FEP/FEP-insulation, length: 300 mm,
central or lateral lead exit

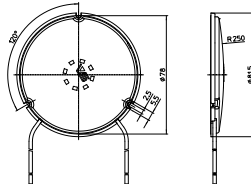
Fixing holes for screws M3 or
self-tapping screws 2.9



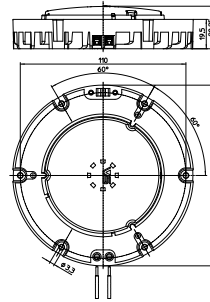
With central lead exit



With lateral lead exit



With heat sink, protection cover and 2-poles screw terminals



Max. output W	Type	Ref. No.		Voltage AC 50/60 Hz V	Number of LEDs pcs.	Colour	Correlated colour temperature K	Cover	Luminous flux lm		CRI Ra	Lead exit	Energy efficiency	
		with heat sink	without heat sink						min.	typ.				
13	LR30W	559550	559552	220–240	30	warm white	2600...2900	clear	910	940	> 80	central	A+	
	LR30W	on request	559553						lateral	A+				
	LR30W	559551	559554						diffuse	780		800	central	A
	LR30W	on request	559555						lateral	A				
	LR30W	557843	557834	220–240	30	warm white	2900...3200	clear	1100	1190	> 80	central	A+	
	LR30W	on request	557835						lateral	A+				
	LR30W	557844	557836						diffuse	935		1010	central	A+
	LR30W	on request	557837						lateral	A+				
LR30W	557845	557838	220–240	30	neutral white	3700...4200	clear	1140	1210	> 80	central	A+		
LR30W	on request	557839						lateral	A+					
LR30W	557846	557840						diffuse	955		1030	central	A+	
LR30W	on request	557841						lateral	A+					
Accessories		Description							Tape thickness	Thermal conductivity	Breakdown voltage*			
—	—	557692	Thermally conductive transfer tape Ø 76 mm							0.25 mm	0.8 W/mK	5.5 kV		
—	—	558229	Thermally conductive non-adhesive transfer tape Ø 76 mm							0.25 mm	2 W/mK	3 kV		
—	—	557691**	Thermally conductive transfer tape, adhesive on both sides Ø 82 mm							0.19 mm	0.9 W/mK	10.3 kV		

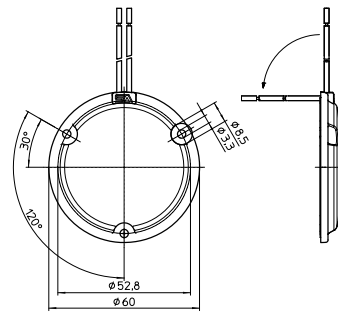
* Average value (not for specification purpose) | ** For use in luminaires of protection class I (has to be tested in luminaire)

The values contained in this data sheet can change due to technical innovations. Any such changes will be made without separate notification.

ReadyLine C 06

Technical notes

Power factor: > 0.95
 Dimensions: Ø 60 mm
 Welded leads: double FEP/FEP-insulation,
 length: 300 mm, lateral lead exit
 Fixing holes for screws M3



Max. output W	Type	Ref. No.	Voltage AC 50/60 Hz V	Number of LEDs pcs.	Colour	Correlated colour temperature K	Cover	Luminous flux lm		CRI R _a	Lead exit	Energy efficiency
								min.	typ.			
8.7	LR12W	559565	220–240	12	warm white	2600...2900	clear	590	650	> 80	lateral	A+
	LR12W	559566					diffuse	480	530	> 80		A
	LR12W	559567	220–240	12	warm white	2900...3200	clear	720	780	> 80	lateral	A+
	LR12W	559568					diffuse	610	660	> 80		A+
	LR12W	559569	220–240	12	neutral white	3700...4200	clear	740	800	> 80	lateral	A+
	LR12W	559570					diffuse	630	680	> 80		A+
Accessories			Description				Tape thickness	Thermal conductivity	Breakdown voltage*			
—	—	559968	Thermally conductive adhesive transfer tape Ø 64 mm				0.25 mm	0.8 W/mK		5.5 kV		
—	—	559969	Thermally conductive transfer tape, non-adhesive Ø 59 mm				0.25 mm	2 W/mK		3 kV		
—	—	559970**	Thermally conductive transfer tape, adhesive on both sides Ø 64 mm				0.19 mm	0.9 W/mK		10.3 kV		

* Average value (not for specification purpose) | ** For use in luminaires of protection class I (has to be tested in luminaire)