

LED SPOT

IPLINE COB CRI90



IPLINE COB – CRI90

RECESSED MOUNTED LED SPOT

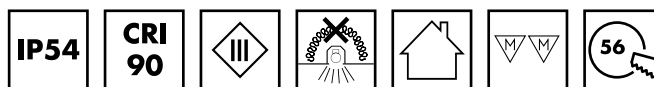
This LEDSpot will give you the IP protection you are looking for with a clean design and a front panel protection made of glass. Real colours thanks to high colour rendering index

Ready for damp locations

This highly IP protected LEDSpot will give you the best performance in every condition.

Typical applications

- Furniture lighting
- Residential lighting
- Retail lighting



IPLine COB

- **DEGREE OF PROTECTION: IP54**
- **COLOUR RENDERING INDEX: CRI 90**
- **NARROW COLOUR TOLERANCES: 3 SDCM**
- **HIGH-QUALITY COB TECHNOLOGY**
- **5 YEARS GUARANTEE**
- **MADE IN ITALY**



IPLine COB - CRI90

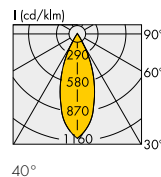
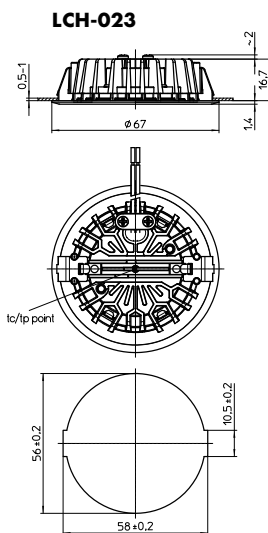
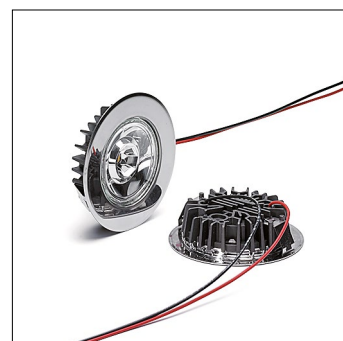
Complete LEDspot IP54 equipped with optics, heat sink, leads and metal frame

Technical notes

- Metal frame, round
- For cut-out: Ø 56 mm
- LEDspot with one LED and with thermoplastic heat sink
- Reflector with clear glass
- Beam angle: 40°
- Colour accuracy initially: 3 SDCM
- CRI R_a: 90
- Leads: Cu tinned, stranded conductors AWG22, PVC-insulation, length: 250 mm
- Use of external LED constant-current drivers
- Snap-in clips for easy installation

Degree of protection: IP54

- Allowed ambient temperature: 0 to 40 °C
- Allowed storage temperature: -30 to 60 °C
- Lumen maintenance L90/B30: 50,000 hrs. (t_c/t_p = 75 °C)
- Max. operating temperature at t_c/t_p point: 85 °C
- Weight: 50 g
- Packaging unit: 45 pcs.



Type	Description	Ref. No.		Colour	Correlated colour temperature K	Luminous flux (lm) and typical voltage (U _{typ}) and power consumption (P _{el})*	Light intensity at max. current Candela	Beam angle °	CRI
		Frame colour	silver	white		350 mA			
LEDspot IPLine COB (LCH-023)						P _{el} = 2.9 W; U _{typ} = 8.4 V			
LCH-023-930	IPLine COB 3000K	572549	572548	warm white	3000	320	380	40	90
LCH-023-940	IPLine COB 4000K	572551	572550	neutral white	4000	345	440	40	90

Emission data at t_a = 25 °C | Further colour temperatures or frame colours on request
 * Production tolerance of luminous flux, voltage and power consumption: ±5%

LED drivers

You will find more information about our LED drivers on our website: www.vossloh-schwabe.com

Voltage	Output power	Output current DC	Output voltage DC	Ref. No.	Version	Current setting	Dimming	Max. service life time in hrs.	Max. operating temperature in °C	Dimensions: mm (LxWxH)
50–60 Hz	W	mA	V							
350 mA										
120–277	0.7–13	350mA	2–38	187260	EasyLine	-	-	85,000	75	150x43x25
220–240	0.7–11	350mA	2–32	187259	EasyLine	Dip Switch	-	50,000	70	150x43x25
220–240	1.0–15.4	350mA	3–44	187215	ComfortLine	Dip Switch	-	50,000	80	141,6x79x30
220–240	0.7–8.75	350mA	2–25	186519	ComfortLine	-	-	50,000	80	65x30,7x21,5
220–240	0.7–14	350mA	2–40	186229	ComfortLine	-	-	50,000	80	146,8x21x18

Please ensure you choose the correct LED driver for the module in question and that the respective output parameters (current, voltage, wattage) are correct.

The values contained in this data sheet can change due to technical innovations. Any such changes will be made without separate notification.



IPLine – Installation Instruction

General safety information

- VS product may only be installed and commissioned by authorised and fully qualified staff.
- These instructions must be carefully read before installing and commissioning the system, as this is the only way to ensure safe and correct handling.
- An external driver for max. 350 mA is required.
- Before any work is carried out on the equipment, it must be disconnected from the mains.
- All valid safety and accident-prevention regulations must be observed.
- The products should never be inexpertly opened. Repairs may only be undertaken by the manufacturer.
- Dimming: The dimming characteristics of the installed driver have to be observed.
- The photo biological safety of the LED modules is classified into risk groups in accordance with EN 62471: 2008 and IEC TR 62778: risk group 1.

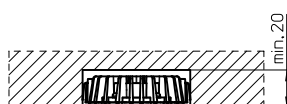
Packaging unit

Type	Packaging unit pcs	Box dimensions mm	Weight per pcs. g	Gross weight packaging unit g
LCH023	45	380x380x80	40	2160

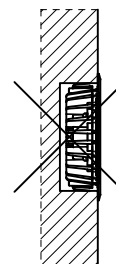
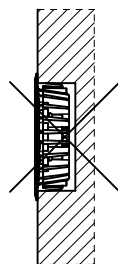
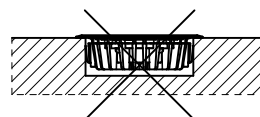
EPREL information

Containing product LCH023	Light source		
Type	Type	EPREL Reg.No.	EE Class
LCH023-930	BXRE-30G0400-B-8x	869601	F
LCH023-940	BXRE-40G0400-B-8x	870281	F

Built-in



Correct position



The values contained in this data sheet can change due to technical innovations. Any such changes will be made without separate notification.

All VS LED Spots at a glance

Tiny

LEDSpot with optics, leads and metal frame
For cut-out: Ø 26 mm
Beam angle: 36°
Lumen output: max. 140 lm
Versions: CC, CV, Kit



IPLine

LEDSpot IP54 with optics, heat sink, leads and metal frame
For cut-out: Ø 56 mm
Beam angle: 40°
Lumen output: max. 330 lm
Versions: CC



SmartLine COB

LEDSpot with optics, heat sink, leads and metal frame
For cut-out: Ø 56 mm
Beam angle: 40°
Lumen output: max. 330 lm
Versions: CC



SoftLine

LEDSpot with heat sink, leads and metal frame
For cut-out: Ø 56 mm
Beam angle: 90°
Lumen output: max. 225 lm
Versions: CV



SmartLine SMD

LEDSpot with optics, heat sink, leads and metal frame
For cut-out: Ø 56 mm
Beam angle: 36°, 40°
Lumen output: max. 250 lm
Versions: CC, CV



Revo

LEDSpot with optics and frame
For cut-out: 67.5x25x5 mm
Beam angle: 60°, 70°
Lumen output: max. 255 lm
Versions: CC, CV, TW



The values contained in this data sheet can change due to technical innovations. Any such changes will be made without separate notification.