

COMPACT OPTICS 2X2 FOR LED LINEAR ALLROUND 5050



COMPACT OPTICS 2x2 FOR LED LINEAR ALLROUND 5050

The optics made of high-quality optical material are designed for installation in luminaires with a glass cover and can be used for many street lighting applications. For the typical lighting situations of the street a uniform and at the same time glare-free light with low color deviations is possible. The optics are optimized for high power LEDs with a footprint 5050. Typical 5050 LED types for use with these optics are Seoul 5050, Samsung LH502C/508C or Lumileds Luxeon 5050.



Compact optics 2x2 for LED Linear Allround 5050

- **HIGH QUALITY OPTICAL MATERIAL**
- **OPTICAL EFFICIENCY OF UP TO 94 %
(WITHOUT FRONT GLASS)**
- **UNIFORM AND AT THE SAME TIME
GLARE-FREE LIGHT**
- **LOW COLOR DEVIATIONS**
- **OPTIC SUITABLE FOR ZHAGA-COMPLIANT
LIGHT ENGINES**

2x2 Streetlight Optics for LED Linear Allround 5050

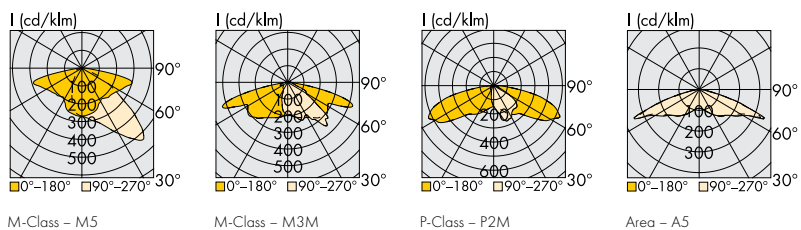
Technical Notes for Optics

- Highly efficient up to 94%
- Material: PMMA
- Dimensions (LxWxH) for
M-Class M5: 50x50x10.2 mm
M-Class M3M: 50x50x10.6 mm
P-Class: 50x50x9.8 mm
Area: 50x50x5.85 mm
- Max. allowed temperature: 80 °C
- Fixing hole for M3/M4 screw
- Max. torque on screws
M3: 0.5 Nm; M4: 1.4 Nm
- Packaging unit: 864 pcs.



Light distribution	Optics type	Ref. No.	Efficiency %
M-Class	M5	570137	93
M-Class	M3M	569966	92
P-Class	P2M	569967	93
Area	A5	569968	94

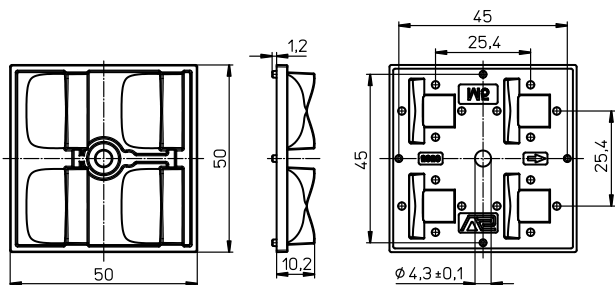
Light Distribution Curves



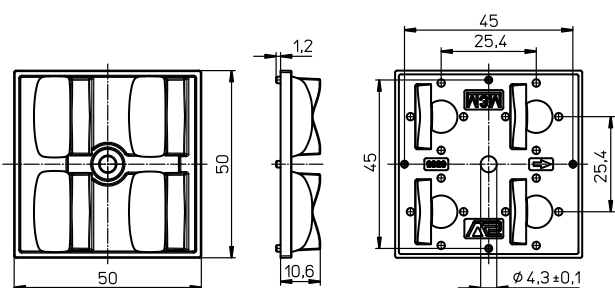
The values contained in this data sheet can change due to technical innovations. Any such changes will be made without separate notification.

Compact optics 2x2 for LED Linear Allround 5050

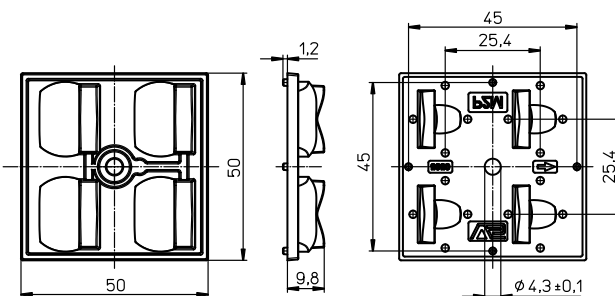
Mechanical Dimensions



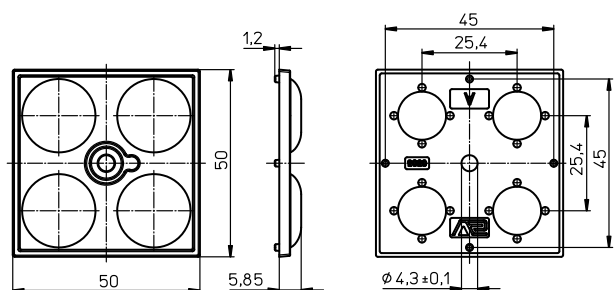
M-Class - M5



M-Class - M3M



P-Class - P2M



Area - A5

The values contained in this data sheet can change due to technical innovations. Any such changes will be made without separate notification.