

LINEAR COVERS 1R FOR SMD W2



LINEAR COVERS 1R FOR SMD W2

Covers protect the SMD board, reduce glare and enable homogeneous light distribution with high transmission.

Typical Applications

Built-in luminaires/general illumination

- Office lighting
- Retail, corridor and shelf lighting
- Furniture lighting
- Backlighting for advertising



Linear Covers 1R for SMD W2

- **HIGH-QUALITY MATERIAL: PMMA**
- **DIFFUSE AND SEMI-DIFFUSE VERSIONS**
- **EFFICIENCY UP TO 92%**
- **SCREWLESS CLIP AND TAPE FIXING POSSIBLE**

Linear Covers 1R for SMD W2

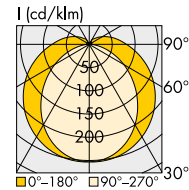
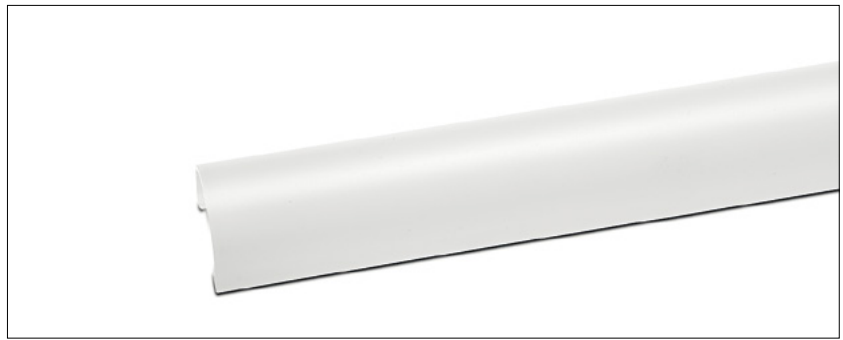
Technical Notes

For protection of LED PCB and reduction of glare as well as for homogenous light distribution
For 1-row SMD PCBs W2 with approx. 1.5 mm material thickness

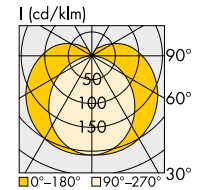
Material: PMMA

Easy assembly: clip fixing of the cover under the fixing screws (head Ø 7 mm) or fixing clips of the SMD board or for tape fixing

Further lengths on request



With semi-diffuse cover

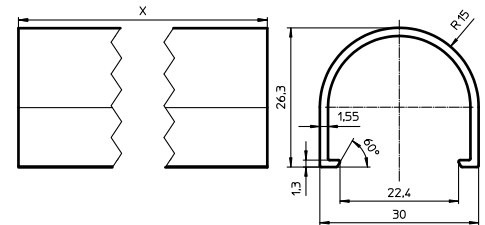


With diffuse cover

LED Covers 1R for SMD W2 clip fixing

Type	Ref. No.	Length X mm	Version	Efficiency* %	Weight g	Packaging unit (pcs.)
89830	568591	597	semi-diffuse	92	81.8	240
89831	568593	1200	semi-diffuse	92	164.4	192
89832	568595	1500	semi-diffuse	92	205.5	192
89833	568597	1800	semi-diffuse	92	246.6	192
89834	568865	3000	semi-diffuse	92	411	192
89830	568592	597	diffuse	84	81.8	240
89831	568594	1200	diffuse	84	164.4	192
89832	568596	1500	diffuse	84	205.5	192
89833	568598	1800	diffuse	84	246.6	192
89834	568866	3000	diffuse	84	411	192

* Measured on a white luminaire sheet

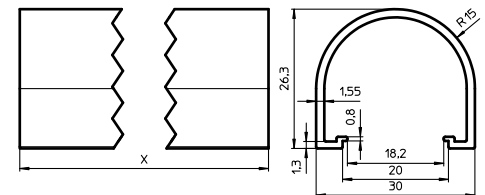


Length tolerance: 597 mm ± 1 mm (ends finished),
1200 / 1500 / 1800 mm + 10 mm (ends raw)

LED Covers 1R for SMD W2 tape fixing

Type	Ref. No.	Length X mm	Version	Efficiency* %	Weight g	Packaging unit (pcs.)
89830	562549	597	semi-diffuse	92	81.8	240
89831	562551	1200	semi-diffuse	92	164.4	192
89832	562553	1500	semi-diffuse	92	205.5	192
89833	562555	1800	semi-diffuse	92	246.6	192
89830	562550	597	diffuse	84	81.8	240
89831	562552	1200	diffuse	84	164.4	192
89832	562554	1500	diffuse	84	205.5	192
89833	562556	1800	diffuse	84	246.6	192

* Measured on a white luminaire sheet



Length tolerance: 597 mm ± 1 mm (ends finished),
1200 / 1500 / 1800 mm + 10 mm (ends raw)

End caps for cover

End caps with or without wire hole for push-fit into the cover

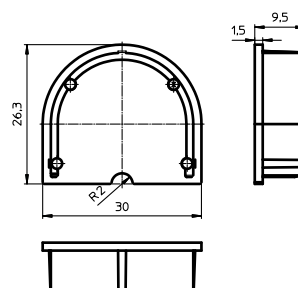
Material: PC, transparent

Weight: 2 g, Packaging unit: 250 pcs.

Ref. No.: 562500 end cap with wire hole

Ref. No.: 562499 end cap without wire hole

End cap with wire hole



The values contained in this data sheet can change due to technical innovations. Any such changes will be made without separate notification.

Fixing clips for LED Covers together with the LED PCB

For screwless fastening of covers together with LED PCBs on the luminaire sheets

Vibration resistant version

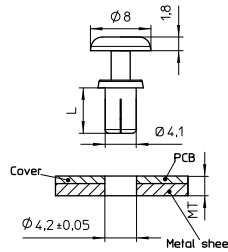
Material: PA, natural (UL-94 V-2)

For PCB fixing hole diameter: $\varnothing 4.1$ mm

The clamping range (MT) is a sum of PCB thickness (PCB) + thickness of luminaire sheet (Metal sheet).

Weight: 0.2 g

Packaging unit: 1000 pcs.



Type	Ref. No.	For clamping range (MT) mm	Length (L) mm
98005	570529	1.7-2.5	4

Preassembled module with SMD board and LED Covers 1R for SMD W2 tape fixing

The LED Cover and SMD PCB are fixed together with double-side adhesive assembled

No screws for PCB and cover fixing needed

Length: assembled 597 mm

Semi-diffuse or diffuse

Ref. No.: on request

