



BLUETOOTH® WIRELESS
TECHNOLOGY DEVICES
AS SMARTNIGHT
Z-SENSORCOUPLER



BLUETOOTH® WIRELESS OUTDOOR CONTROLLER FOR IN- STALLATION ON STREET LIGHTS

Blu2Light – The intelligent wireless lighting control solution

Blu2Light is the first completely open Bluetooth® wireless technology system with mesh functionality for the professional lighting market, which, in addition to a variety of functions for lighting control, offers the luminaire manufacturer added IoT benefits with maximum system security.

Blu2Light SmartNight Z-Sensorcoupler

Supplied via DALI and/or 24V DC, the product is user-friendly and maintenance-free after installation.

Blu2Light SmartNight Z-Sensorcoupler

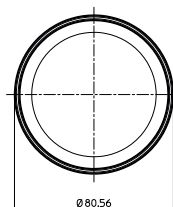
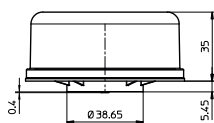
- ENABLES THE INTEGRATION OF A DALI2-CERTIFIED MOTION SENSOR INTO STREET LIGHTS
- INTEGRATED BLUETOOTH® MESH RADIO MODULE
- MAINTENANCE-FREE
- INSTALLATION IN STREET LUMINAIRES IN A Z18 STANDARDISED BASE
- OPERATING LIFETIME: 50.000 HRS. OR 50.000 SWITCHING CYCLES
- PRODUCT GUARANTEE: 5 YEARS



Blu2Light SmartNight Z-Sensorcoupler

Smart Night Outdoor Controller

For installation on street lights in a Z18 standardised base with four contacts for coupling a DALI2-certified motion sensor.



ATTENTION:

- For installation, the flat side of the lower part of the housing must be orientated northwards in the northern hemisphere and southwards in the southern hemisphere. This is a standard Z18 base.
- On the input side, a DALI power supply and/or AUX power supply (24V) must be present.

Type	SmartNight Z-Sensorcoupler / 187634
Ref. No.	
Communication	Blu2Light-Mesh-Netzwerk
Frequency range	2402–2480 MHz
HF output power	< 10 mW EIRP
Power consumption standby	< 0.24 W (max. 1.5 mA at 1.6 V)
Power supply	Via DALI bus and/or AUX 24 V DC +/- 5%
Operating temperature t_a	-25 – 80 °C, non-condensing
IP protection	IP65
Dimensions (Ø x H)	80 x 43 mm
Casing / Impact resistance	polycarbonate, transparent or black / IK09
Weight	71 g
Light sensor	0 – 1000 lx, Vlambda compensated

Product guarantee

- 5 years
- The conditions for the Product Guarantee of the Vossloh-Schwabe Group shall apply as published on our homepage (www.vossloh-schwabe.com). We will be happy to send you these conditions upon request.



Smart Night configuration	Smart Night Z-Sensorcoupler
Z18 standard 4-Pin connector	Yes
Power supply	–
Power supply via DALI* / 24V	Yes
GPS real-time module	–
Twilight sensor	Yes
DALI output	1 active DALI driver *
DALI addresses	1
Push-button input, not in combination with AUX 24V	1
Functional groups (Colour control/DT8)	1
Full Blu2Light compatibility	Yes

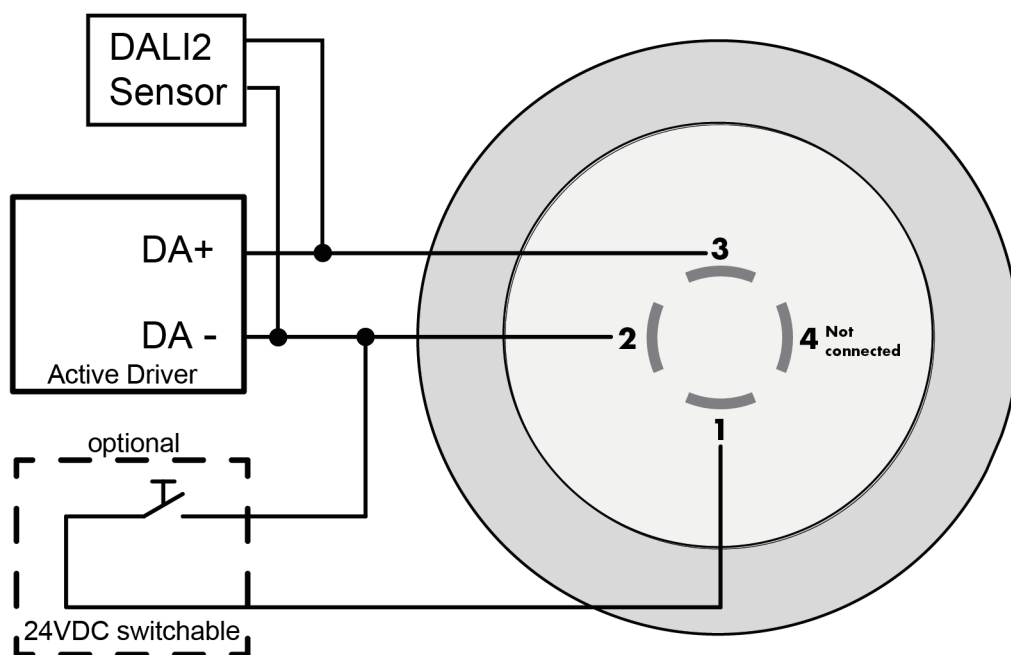
* the maximum DALI current provided by the driver must be observed.

The values in this data sheet may change due to technical innovations and are subject to change without notice.

Product label



Connection example



The values in this data sheet may change due to technical innovations and are subject to change without notice.

Blu2Light SmartNight Z-Sensorcoupler

General Safety and Mounting Instructions

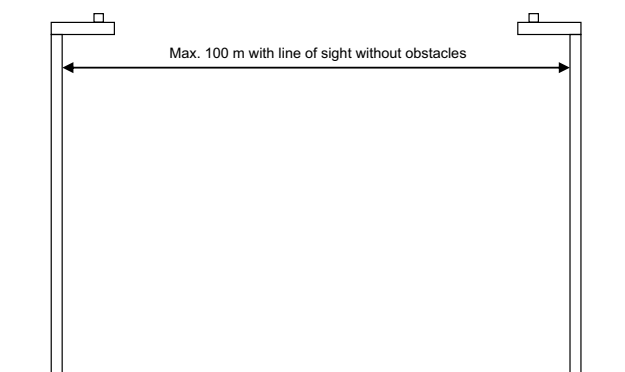
- Only qualified persons are allowed to install Blu2Light products.
- Prior to installing and commissioning the system, read these instructions carefully. Only this will guarantee correct and safe handling. Please keep these instructions as you may need them later.
- The devices must always be disconnected before any work is carried out on them.
- The applicable safety and accident prevention regulations must be observed.
- Opening by unqualified personnel of the products is prohibited: Risk of death from electric shock!
The devices must only be repaired by the manufacturer.
- Only connection to a Dali power supply and/or to 24V DC (AUX) is permitted.
- If the 24 V supply is not required, a push-button input can be implemented here.
- The CLO lifetime in 1000 h refers to the lifetime of the module.
- L1 to L5: are points at which the luminous flux is adjusted over the lifetime to ensure a constant luminous flux over the entire lifetime of the module.

Mounting

- Pay attention to the correct polarity according to the connection markings!
- The Blu2Light Outdoor control units are designed to control street lights.
- First connect the base of the control unit to the luminaire.
The flat side of the lower part of the housing must face north in the northern, in the southern hemisphere to the south. This is a standard Z18 base.
- A DALI power supply and/or 24V DC (AUX) must be present on the input side.

Installation instructions

- Make sure that the polarity is correct.
- Ensure that the housing is aligned correctly according to the correct compass direction.
- Mains voltage at the DALI connection: This will destroy the unit.
- Important note: Buildings, trees or the weather can affect the range!



Setup and operation

- The Blu2Light devices are configured with the LiNA Connect app and can be operated via the LiNA Touch app.
- For the exact procedure for the configuration of the devices please refer to the instructions in the LiNA Connect app or in the corresponding documentation.
- A tablet is required for setup, both tablets and smartphones can be used for operation. Both are not included in the scope of delivery.
- For information on the iOS and Android operating systems that can currently be used, refer to the LiNA Connect/ LiNA Touch manual:



Important note:

- Please refer to the installation instructions included with the product and the applicable Blu2Light system data sheet before installation. Make sure that the Bluetooth radio signal can propagate freely according to the specifications.
- All Blu2Light devices that are supplied via DALI may only be connected to one DALI power supply! Therefore, it is not permissible to connect several Blu2Light devices to one power supply. In this case, malfunctions will occur.
- CAUTION: According to the D4i specification, active drivers deliver up to 250 mA via the DALI interface. This additional power supply allows for the direct connection of external modules such as motion sensors or wireless devices. Ensure that the current consumption of the modules does not exceed the supplied current, otherwise an additional DALI supply is required.
- If a DALI voltage and +24V as AUX voltage are present, the push-button cannot be used. In this case, no connection must be established with the push-button in the LiNA Connect app, otherwise it will permanently send the events.

Bluetooth® wireless technology

The Bluetooth® word mark and logos are registered trademarks owned by the Bluetooth SIG, Inc. and any use of such marks by Vossloh-Schwabe is under license. Other trademarks and trade names are those of their respective owners.



We, Vossloh-Schwabe Deutschland GmbH, herewith confirm that these devices comply with the basic requirements of the directive 2014/53 / EU and other relevant directives. The entire text of the declaration of conformity can be obtained from the following address:
www.vossloh-schwabe.com

The values in this data sheet may change due to technical innovations and are subject to change without notice.