

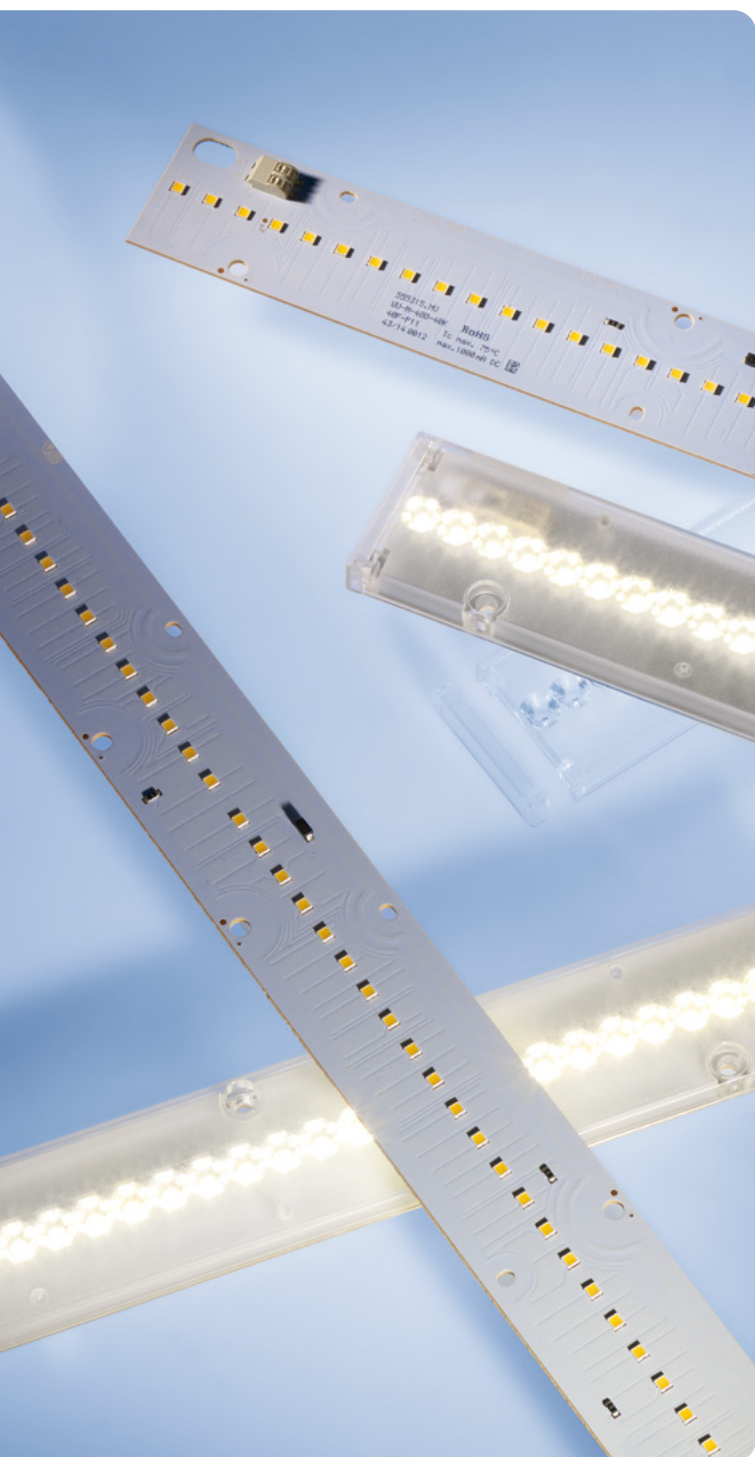
## FIXING CLIPS AND EXPANDING RIVETS



### FIXING CLIPS AND EXPANDING RIVETS

#### For screwless secure fixing of LED modules and optics

Fixing clips are available to enable quick and secure fixing of the LED board or also the LED board together with the optics in the luminaire casing.



#### Fixing clips and expanding rivets

- **SCREWLESS FIXATION**
- **FAST AND EASY MOUNTING**
- **HIGH QUALITY MATERIAL**

## Fixing clips for LED PCBs

For screwless fastening of LED PCB to the luminaire sheet  
 The clamping range (MT) is a sum of PCB thickness (PCB)  
 + luminaire sheet thickness (Metal sheet).

Material: PC, white (UL-94 V-2)

For PCB fixing hole diameter:

Ø 4.1–4.5 mm

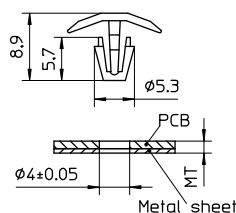
Clamping range (MT): 2.1–2.6 mm

Weight: 0.2 g

Packaging unit: 1000 pcs. (.11 = 10,000 pcs.)

Type: 98050

**Ref. No.: 562870**



**562870**

Material: PA, natural (UL-94 V-2)

Vibration resistant version

For PCB fixing hole diameter:

Ø 3.4 mm

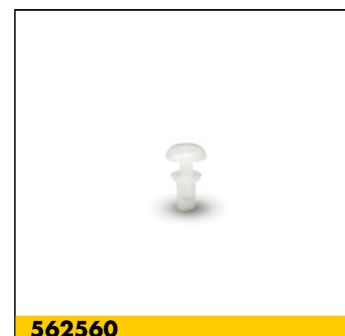
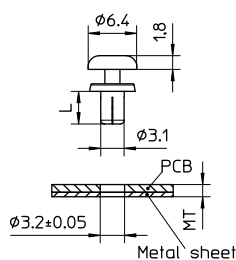
Clamping range (MT): 2–2.8 mm

Weight: 0.2 g

Packaging unit: 1000 pcs.

Type: 98010

**Ref. No.: 562560**



**562560**

Material: metal clip with silicone pad

For PCB fixing hole: 4.3–4.8 mm

Cut-out to luminaire sheet: 3.7x3.7 mm

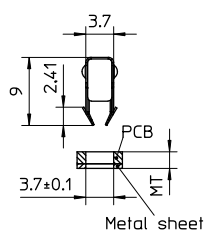
Clamping range (MT): 1.5–3.6 mm

Weight: 0.2 g

Packaging unit: 2000 pcs.

Type: 99000

**Ref. No.: 558363**



**558363**

The values contained in this data sheet can change due to technical innovations. Any such changes will be made without separate notification.

## Fixing expanding rivets for optics or covers together with the LED PCB

For screwless fastening of optics or covers together with the LED PCB to the luminaire sheet

Vibration resistant version

Material: PA, natural (UL-94 V-2)

For PCB fixing hole diameter:  $\varnothing 4.1$  mm

The clamping range (MT) for optics is a sum of PCB thickness (PCB)

+ optics thickness (O) + luminaire sheet thickness (Metal sheet)

and for covers it is a sum of PCB thickness (PCB)

+ luminaire sheet thickness (Metal sheet)

Weight: 0.2 g

Packaging unit: 1000 pcs.

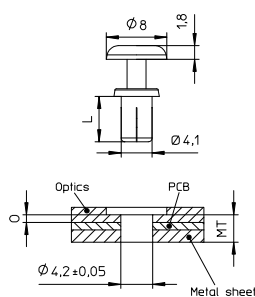


Type	Ref. No.	For clamping range (MT) mm	Length (L) mm
98005	<b>570529</b>	1.7–2.5	4
98004	<b>569408</b>	4.5–5.5	7
98001	<b>562557</b>	5.5–6.5	8
98002	<b>562558</b>	6.5–7.5	9
98003	<b>562559</b>	7.5–8.5	10

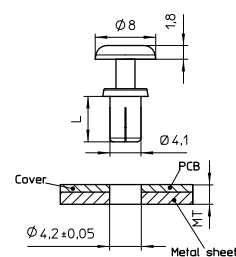
### Material thickness of VS optics

Optics type	Material thickness (O) (mm)
963	2.4
988	4.6
994	3.5
995	4.55

### For optics



### For covers



The values contained in this data sheet can change due to technical innovations. Any such changes will be made without separate notification.